

d.m.i.

mechanical engineers

Pinnaclehill Industrial Estate,
Kelso, Roxburghshire, TD5 8DW
Tel: 01573 226 255 Fax: 01573 228 255
Email: enquiries@dmi.gb.net
Website: www.dmimechanicalengineers.co.uk

Directors: R.J. Hay & G. Brown

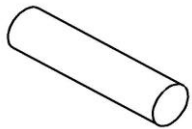
grain handling - sheet metal work - lathe & milling work - steel stockists

Grain Ducting & Accessories

All prices exclude VAT

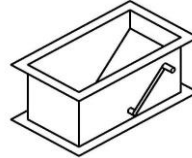
Prices from: 19 September 2017

Straight Sections (Per Foot)



5"	£6.00	(4' Lengths)
6"	£6.50	(4' & 6' Lengths)
7"	£7.00	(4' & 6' Lengths)
8"	£7.50	(4' & 6' Lengths)

Double Entry Valve Boxes (inc. Handle)



6"	£119.50
7"	£121.00
8"	£123.00

Bends 15, 30 & 45 degree



5"	£39.00
6"	£39.50
7"	£40.00
8"	£43.00

Y-Valves (inc. Handle)



5"	£283.00
6"	£289.00
7"	£319.00
8"	£340.00

Overspill Connectors



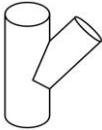
5"	£127.00
6"	£132.00
7"	£137.00
8"	£142.00

Branch Valves (inc. Handle)



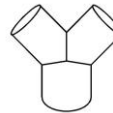
5"	£283.00
6"	£288.00
7"	£318.00
8"	£337.00

Offset Connectors



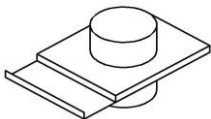
5"	£78.00
6"	£81.00
7"	£83.50
8"	£86.50

Y-Connectors



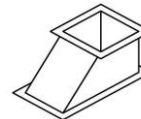
5"	£78.00
6"	£83.50
7"	£89.50
8"	£95.50

Grain Flow Regulators



5"	£107.00
6"	£108.00
7"	£109.00
8"	£110.50

Overspill Boxes



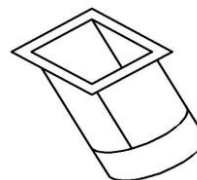
6"	£71.00
7"	£79.00
8"	£90.00

Straight Transformers



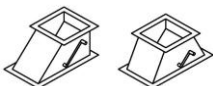
6"	£68.00	6"x6" - 5"Ø
6"	£69.00	6"x6" - 6"Ø
7"	£78.00	7"x7" - 5"Ø
7"	£79.00	7"x7" - 6"Ø
7"	£80.00	7"x7" - 7"Ø
8"	£85.00	8"x8" - 7"Ø
8"	£86.00	8"x8" - 8"Ø

Angled Transformers



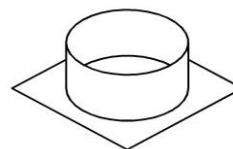
6"	£68.50	6"x6" - 5"Ø
6"	£70.50	6"x6" - 6"Ø
7"	£79.00	7"x7" - 5"Ø
7"	£79.50	7"x7" - 6"Ø
7"	£80.00	7"x7" - 7"Ø
8"	£86.50	8"x8" - 7"Ø
8"	£88.50	8"x8" - 8"Ø

Single Entry Valve Boxes (inc. Handle)



6"	£118.00	Side Intake
7"	£120.50	Side Intake
8"	£123.00	Side Intake
6"	£119.00	Central Intake
7"	£121.50	Central Intake
8"	£124.00	Central Intake

Spigots



6"	£33.00	6"x6" - 5"Ø
6"	£35.00	6"x6" - 6"Ø
7"	£33.50	7"x7" - 5"Ø
7"	£35.50	7"x7" - 6"Ø
7"	£37.00	7"x7" - 7"Ø
8"	£37.50	8"x8" - 7"Ø
8"	£39.50	8"x8" - 8"Ø

Prices are correct at time of printing, but are subject to change due to being regularly updated due to the fluctuation of steel prices.

www.dmimechanicalengineers.co.uk